



Aircraft Mechanics Fraternal Association Local 14

2800 South 192nd Street, Suite 100, SeaTac, WA 98188

Phone: (206) 439-0300 Fax: (206) 439-0309

2011 AMFA Local 14 Holiday Toy Drive



The LEC and ACC of AMFA Local 14 would like to thank everyone who helped make this year's holiday toy drive successful. Together we filled the entire cage—just like last year. This year's most popular toy was Mr., Mrs., and the remainder of the now extensive Potato Head family—of which we took in over sixty-nine members.



This year's most popular toy.



Jen Smith, Roberto Rios, Tracy Hoirup and Jeff Voskuhl enjoy the pre-delivery barbecue.

So just what happens with all these toys? The answer begins with the arrival at the Seattle hangar of Seattle Line Lead Technician, Tom Wertman and his wife Brenda. Once again this year the Wertmans were kind enough to donate their time and the use of their truck and trailer to ensure the toys were delivered intact and as scheduled. Meeting Tom and Brenda at the hangar were LEC members Jim Rea, Marcus Smith, Brad Fornelius, Tom Thurber; ACC members Tim Cullen, Jason Munson, Dave Tarshis; Shop Representative Tony Sander, and Marcus's wife Jen. The group spent about thirty minutes loading the Wertmans' truck, and then began the short drive—rush hour traffic was good this year—to Eastside Baby Corner's collection center in Issaquah.



Loading the Wertmans' trailer:
 Marcus Smith, Tony Sander, Jim Rea, Tom Thurber, Tom Wertman,



Jim Rea, Marcus Smith, Brad Fornelius and Tony Sander.

Helen Banks Routon, Eastside Baby Corner's Director of Development and Community Relations, and a group of EBC volunteers met Local 14's group at the entrance to the center. A bucket-brigade was formed, and Tom and Brenda's truck was quickly unloaded while the toys were simultaneously stacked to the rafters inside the building. Afterwards Helen took the group on a tour of the facility.



Unloading at EBC:
 Tony Sander, Jason Munson,



Tim Cullen and Helen Banks Routon.



Our bucket-brigade in action.



Dave Tarshis, Brenda Wertman, Jen Smith and EBC volunteers form the end of the line.

Upon entering the building, one quickly becomes impressed with what Eastside Baby Corner is accomplishing with a bare minimum of resources. The collection center is a very simple, sheet-metal building (similar to the Seattle GSE shop) which almost seems to be bursting at the seams from the large volume of items crammed into its small confines. Mounds of clothing, books and toys which await sorting fill the facility from floor to ceiling. With very little space left in which to work, a team of volunteers clad in ski jackets and gloves—even heat is a luxury that is done without—busily sort, stack, fold, and pack the items into plastic bags for distribution.

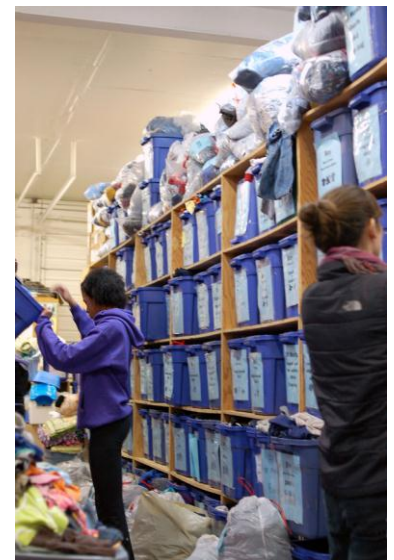


EBC volunteers sort clothing.

The process of distribution begins when an order is received from one of the countless charitable organizations and schools with which Eastside Baby Corner collaborates. The order is entered in a computer, and a label (similar to the pick slips used in the Seattle hangar's stores facility) is printed which includes the child's age, gender and clothing size. Looking at the label, a volunteer then fills the order, finding appropriate clothes on the facility's shelves and putting them in a plastic bag. A book and a toy, usually used, are placed in each bag as well—new toys, like the ones donated by you, are usually reserved for special occasions like birthdays. Once the bag is filled, the organization or school which placed the order is notified that it is ready for pick up. The turnaround time from receiving the order to delivery is one week or less.



Bagged baby clothing ready for pick up.



Every bit of the building's free space is utilized.

This process continues day after day. On an average night, two hundred bags of clothing are filled. During the week Local 14 visited, 751 orders were filled and eventually distributed to needy families around east King County. In most of the families to whom the clothing is distributed, at least one member is employed. Eastside Baby Corner helps these families fill the gap between their needs and their paychecks.



There's a great need for baby formula at EBC.



Local 14 Vice President, Marcus Smith; Eastside Baby Corner's Director of Development and Community Relations, Helen Banks Routon; and Local 14 President, Jim Rea.

Eastside Baby Corner is staffed by sixty core volunteers and many others who help whenever they can. Families are encouraged to volunteer together and some volunteers as young as seven years of age can be seen working in the facility. These volunteers put in an average of 1,000 to 1,200 hours per month, and what they accomplish is truly impressive. In 2010 they filled over 6,000 bags of clothing, distributed 1,200 car seats and provided the needy with close to 400,000 pairs of diapers. And the needs keep growing. There was a fourteen percent increase in orders filled from 2008 to 2009, and a similar or greater increase is expected this year. Local 14's toy supply is expected to be exhausted in less than three months.



Eastside
Baby
Corner

Giving kids what they need to thrive



Once again AMFA Local 14 and Eastside Baby Corner thank you for your participation in this year's toy drive. If you'd like to learn more about Eastside Baby Corner, please ask one of the Local 14 members mentioned in this article, or visit the Eastside Baby Corner website: babycorner.org

SAFETY IN THE AIR BEGINS WITH QUALITY MAINTENANCE ON THE GROUND